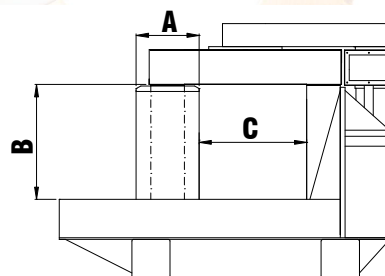


## LBH160D Linmast Induction Heater



### Technical Specification

<i>Power Consumption (Max.):</i>	25 kva
<i>Voltage:</i>	380v/415v/460 v
<i>Current (Maximum):</i>	60 A
<i>Frequency:</i>	50/60 Hertz
<i>Duty Cycle:</i>	Continuous
<i>Overall Dimensions (lwxhxh):</i>	111 x 50 x 72 cm
<i>Unit Weight:</i>	330 kg
<i>Core Section (AxA):</i>	100 x 100 mm
<i>Core/Coil Diameter:</i>	190 mm
<i>Pole Height (B):</i>	325 mm
<i>Window Width (C):</i>	350 mm
<i>Efficient Heat Limit:</i>	800 kg
<i>Cross Bars Supplied:</i>	80 x 80 mm
<i>Cross Bar Diameter:</i>	117 mm



### **Construction Features**

- *Heavy duty robust steel frame construction*
- *Top Swing Arm in Stainless Steel Shell*
- *Top Swing Arm lifts from the core as pushed away*
- *Top Swing Arm centre pivot for balanced seating*
- *Top Swing Arm swings on bearing construction for easy and precise movement*
- *Two piece core constructed from laminated low loss electrical steel*
- *Cross Bars encased in Stainless Steel Housing*
- *Fully Encapsulated Coil*
- *Robust Magnetic Temperature Sensor protected in a Stainless Steel Armour*

### **Control Features**

- *Microprocessor controlled*
- *User Friendly Menu Operation*
- *LCD Display*
- *Membrane Keypad*
- *Automatic Demagnetisation at end of heating cycle (Residual magnetism < 2 A/cm)*
- *3 Power Steps – High, Medium & Low form heating different metals*
- *Temperature Control (0 to 250°C, ± 2°C)*
- *Preset Temperature 110°C*
- *Temperature Hold Function*
- *Time Control (0 to 60 minutes ± 0.01 seconds )*
- *Current Protection*
- *Over-Temperature Protection*

### **Other Features**

- *Heat Resistant Gloves Supplied*
- *Digital Temperature Calibration (±2°C)*
- *CE International Certification*
- *ISO 9001:2000 Certification*